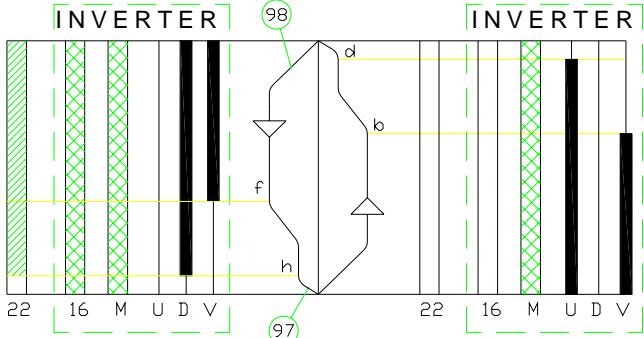


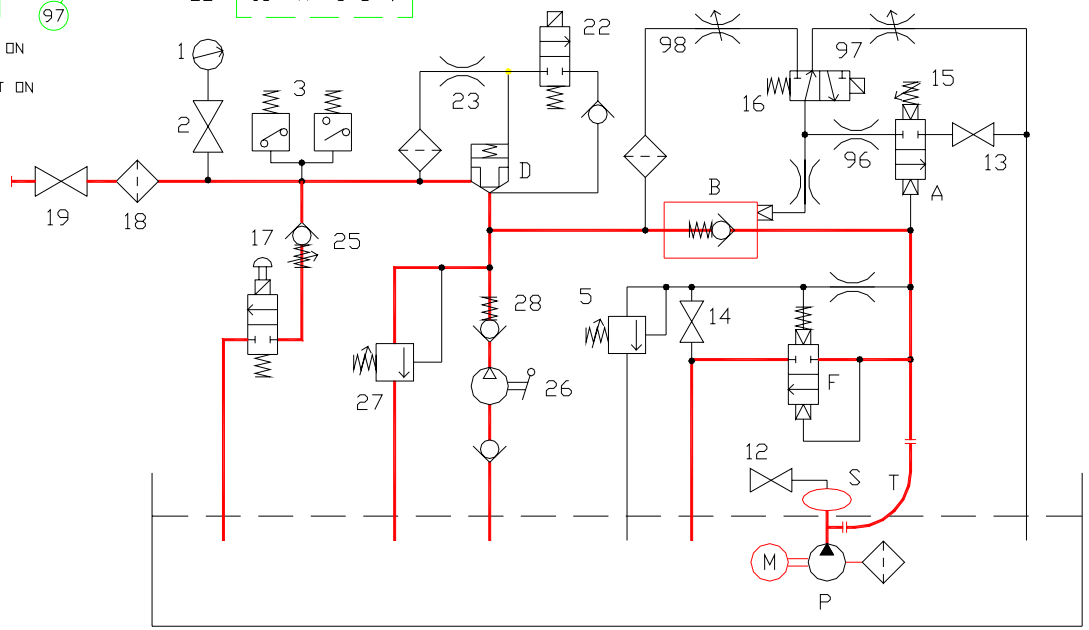
- 1 Gauge
- 2 Gauge cut-out cock
- 3 (Pressure switches)
- 5 Maximum pressure valve adjusting screw  
- clockwise increase (+) - anticlockwise decrease (-)
- 12 Air bleed (pump silencer)
- 13 Block screw of pressure reducer
- 14 Test fastening screw (half-turn anticlockwise)
- 15 Pressure reducer adjusting screw  
- clockwise increase (+) - anticlockwise decrease (-)
- 16 Downstroke solenoid valve
- 17 Emergency downstroke pushbutton (solenoid valve)
- 18 Filter
- 19 Valve cut-out cock
- 22 2° Downstroke solenoid valve
- 23 Downstroke safety valve closing throttle (\*)
- 25 Emergency downstroke minimum pressure valve  
- clockwise increase (+) - anticlockwise decrease (-)
- 26 Hand pump
- 27 Hand pump safety valve adjusting screw  
- clockwise increase (+) - anticlockwise decrease (-)
- 28 Hand pump non-return valve
- 96 Pressure reducer draining throttle (\*)
- 97 Non-return valve closing adjusting screw (\*)
- 98 Non-return valve opening adjusting screw (\*)

- A) Pressure reducer
- B) Pilot - operated non-return valve
- D) Downstroke safety valve
- F) Upstroke safety valve
- M) Motor
- P) Pump
- S) Pump silencer
- T) Flexible pipe
- (\*) THIS VALVE IS FACTORY SET. ADJUSTMENT SHOULD ONLY BE CARRIED OUT VIA THE MANUFACTURE'S TECHNICAL SPECIFICATIONS



- h - Downward stop contact
- f - Downward starting reducing speed contact
- d - Upward stop contact
- b - Upward starting reducing speed contact
- U - Upward signal to inverter
- D - Downward signal to inverter
- V - High speed signal to inverter

- INVERTER INPUT ON
- ▨ INVERTER OUTPUT ON
- OFF
- ▨ ON



For amendment A3 designed

**VALVE ASSEMBLY AND DIAGRAM  
VALVE LX  
FOR INVERTER**



**Start Elevator**

**02 520 / G**

**rev. 3**

**1/1**