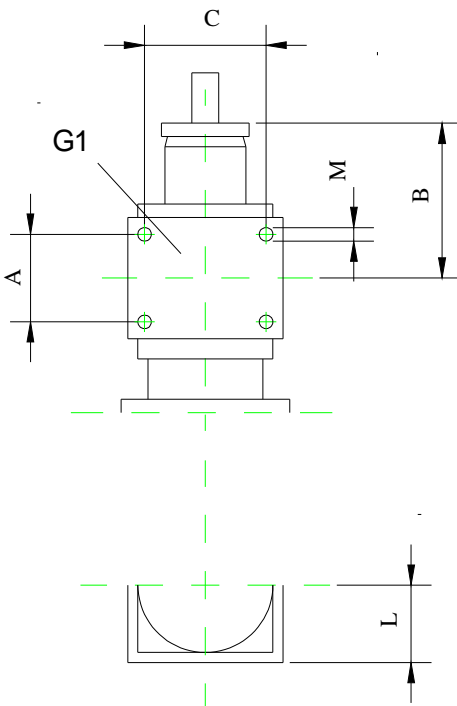


	THREE STAGES PISTONS TYPE						
	58/3	75/3	98/3	107/3	127/3	150/3	176/3
<b>A1</b>	60	60	60	60	60	60	80
<b>B1</b>	85	85	87	90	115	120	136
<b>C1</b>	60	70	90	100	110	130	150
<b>M1</b>	M10	M10	M10	M10	M10	M12	M16
<b>L1</b>	57	65	74	78	89	101	<b>117</b>
<b>A2</b>	60	60	60	60	80	80	80
<b>B2</b>	145	145	153	153	165	167	155
<b>C2</b>	80	100	120	130	150	180	200
<b>M2</b>	M10	M10	M12	M12	M16	M16	M16
<b>L2</b>	68	79	<b>95</b>	101	<b>117</b>	<b>131</b>	<b>151</b>



The vertical distances that regard the guiding yoke, the pit deep and the lowest parts of the car must be calculated and checked with completely closed piston.

For to move the hangers for to fix the arms, always to clockwise rotate the piston heads.



	TWO STAGES PISTONS TYPE								
	46/2	60/2	78/2	85/2	103/2	120/2	141/2	170/2	205/2
<b>A</b>	60	60	60	60	60	60	80	80	80
<b>B</b>	95	95	102	102	120	118	125	134	135
<b>C</b>	60	70	90	100	110	130	150	180	200
<b>M</b>	M10	M10	M10	M10	M10	M12	M16	M16	M16
<b>L</b>	57	65	74	78	89	101	<b>117</b>	<b>131</b>	<b>151</b>

