

PISTON - PUMP UNIT
CONNECTION HOOKUP



Start Elevator Srl

08 190 / G

rev. 0

1/3

CASE "A1" : A PISTON AND A **55-380 L/MIN** 90/E OR 90/M PUMP UNIT
- A TUBE TYPE <1> WITH 35, 42 OR 1"1/4, 1"1/2 DIAMETER

CASE "A2" : A PISTON AND A **380 L/MIN** 90/E OR 90/M PUMP UNIT
WITH A LONG PIPE OR LOW STATIC PRESSURE
- TWO PIPES TYPE <1> WITH 42 OR 1"1/2 DIAMETER
- TWO 2"-2x1"1/2 MANIFOLD

CASE "A3" : A PISTON AND A **440-660 L/MIN** 90/E2 OR 90/M2 PUMP UNIT
- TWO PIPES TYPE <1> WITH 42 OR 1"1/2 DIAMETER

CASE "B" : TWO PISTONS AND A **55-380 L/MIN** 90/E OR 90/M PUMP UNIT

"B1" TRADITIONAL SYSTEM

- THREE PIPES TYPE <1> WITH 35, 42 OR 1"1/4, 1"1/2 DIAMETER
- A TUBE TYPE <T> WITH 1/4 DIAMETER

"B2" CONFORMITY WITH 95/16/EC DIRECTIVE

- A TUBE TYPE <1> WITH 35, 42 OR 1"1/4, 1"1/2 DIAMETER
- TWO PIPES TYPE <2> 35 OR 42 DIAMETER

CASE "C" : TWO PISTONS AND A **440-660 L/MIN** 90/E2 OR 90/M2 PUMP UNIT

"C1" TRADITIONAL SYSTEM

- TWO PIPES TYPE <1> WITH 42 OR 1"1/2 DIAMETER
- A TUBE TYPE <T> WITH 1/4 DIAMETER

"C2" CONFORMITY WITH 95/16/EC DIRECTIVE

- TWO PIPES TYPE <1> WITH 42 OR 1"1/2 DIAMETER
- TWO PIPES TYPE <2> 42 DIAMETER

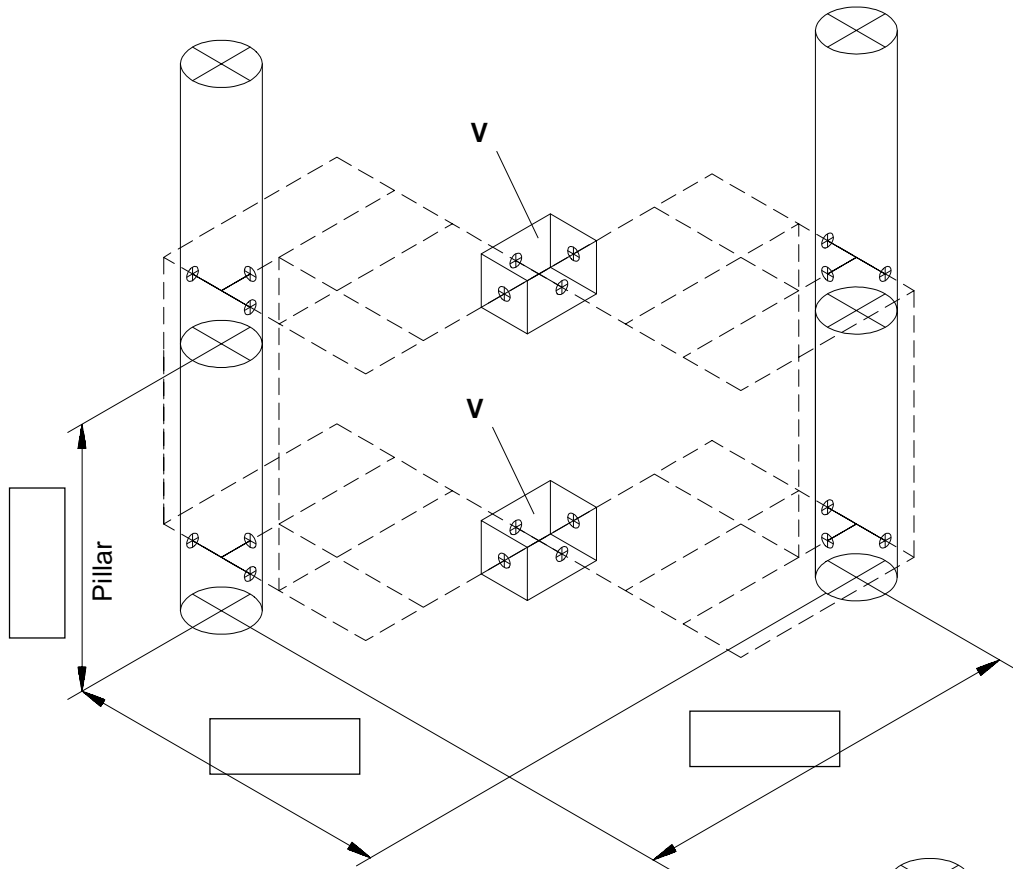
THE PIPES <1> CAN BE RIGID OR FLEXIBLE TYPE.

THE PIPES <2> CAN BE RIGID TYPE ONLY,
MUST BE WELDED, FLANGED OR THREADED AND CALCULATED AS THE CYLINDER WALLS.

THE PIPES <T> ARE NORMALLY FLEXIBLE TYPE WITH SMALL DIAMETER.

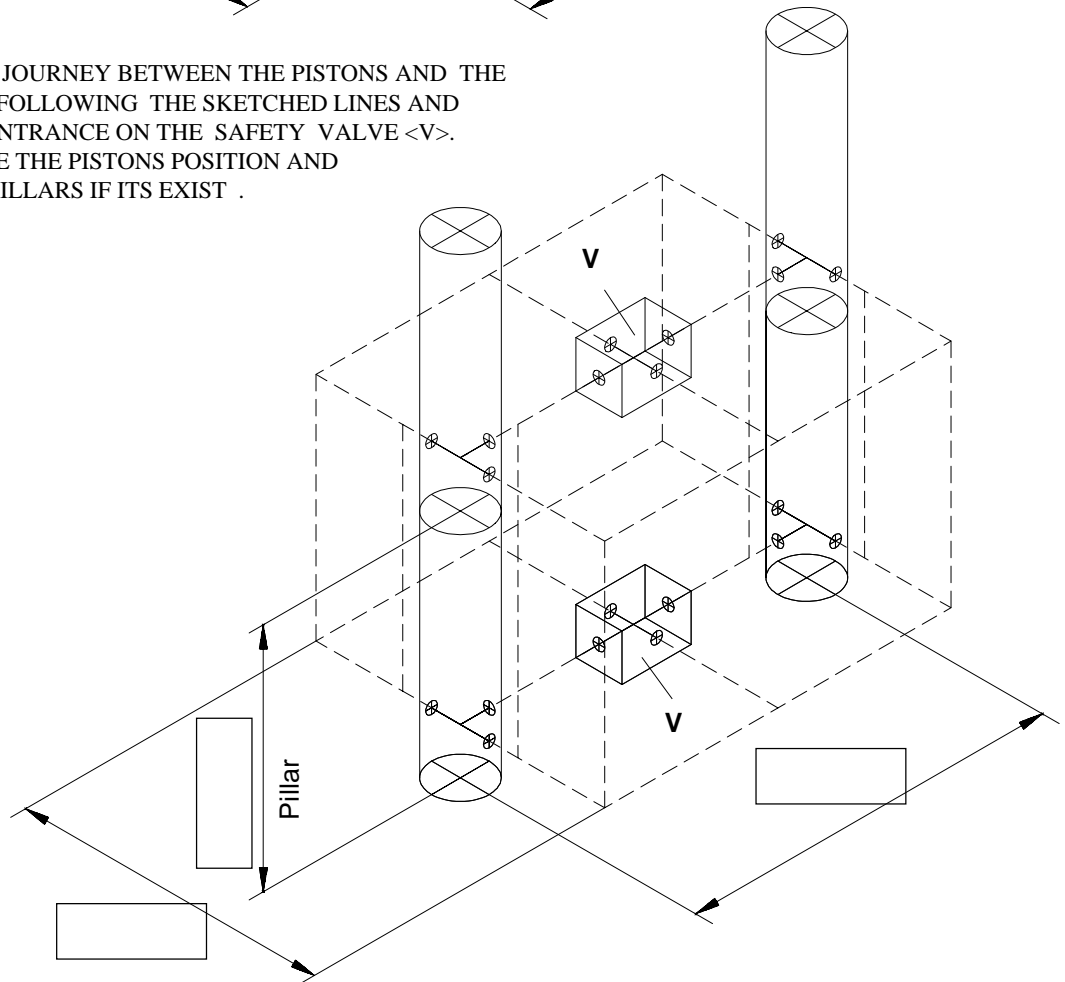
IS POSSIBLE TO SUPPLY THE COMPLETE PIPES <2> ONLY HAVING THE ACCURATE POSITION OF THE PISTONS AND OF THE SAFETY VALVE.

TO USE THE OUTLINES QUOTED ON PAGE 3
FOR TO INDICATE THE PIPES JOURNEY AND THE SAFETY VALVE POSITION.



TO STRESS THE PIPES JOURNEY BETWEEN THE PISTONS AND THE SAFETY VALVE. <V> FOLLOWING THE SKETCHED LINES AND TO INDICATE PIPES ENTRANCE ON THE SAFETY VALVE <V>. MOREOVER TO VALUE THE PISTONS POSITION AND THE HEIGHT OF THE PILLARS IF ITS EXIST .

SIZE IN MM.



PISTON - PUMP UNIT
CONNECTION HOOKUP



Start Elevator Srl

08 190 / G

rev. 0

3/3