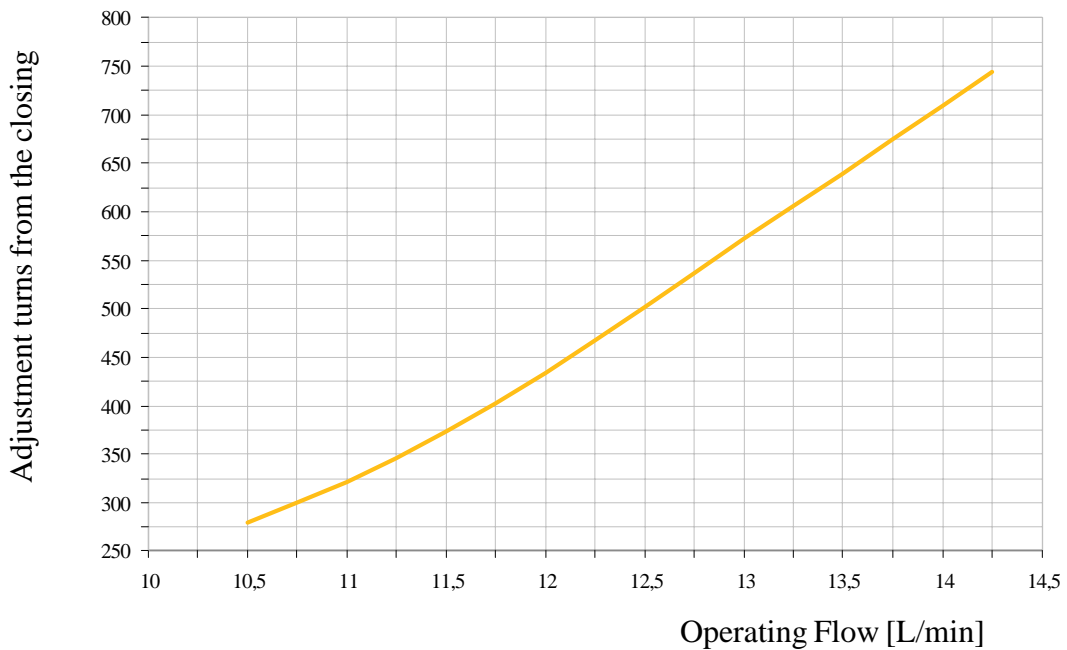
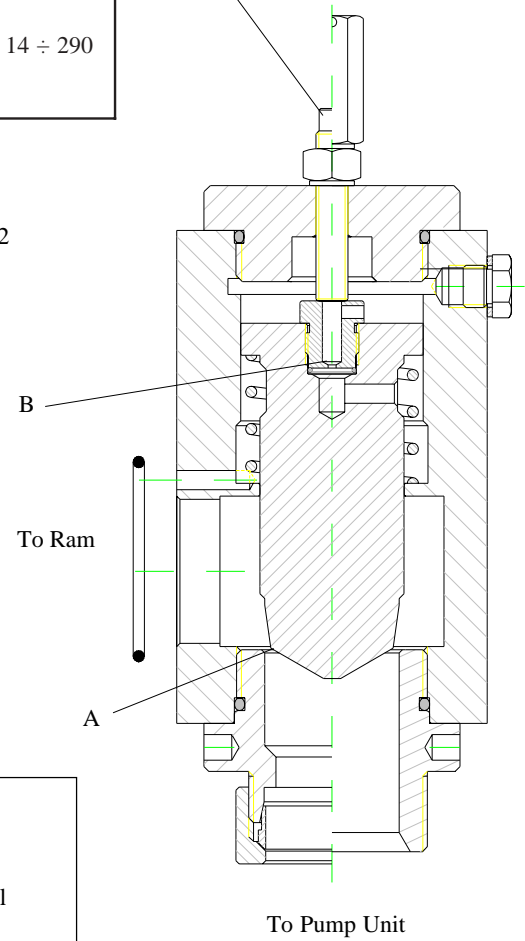
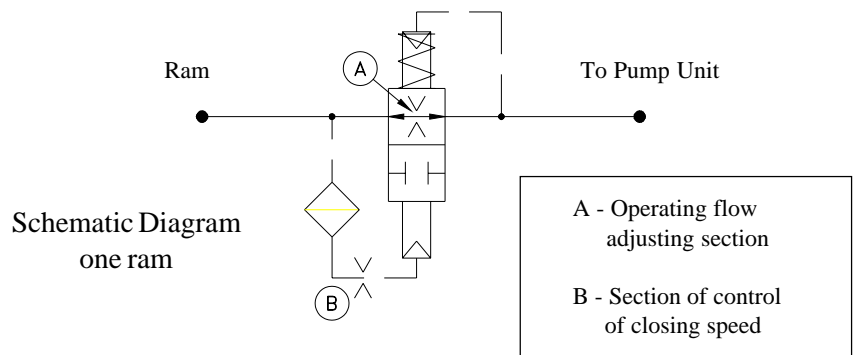
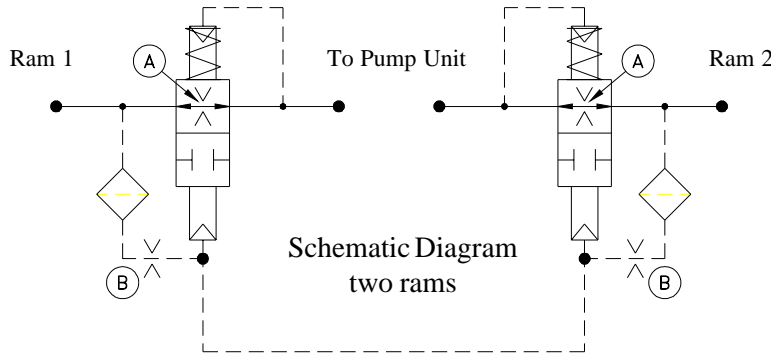


Valve Type	Identification	Pump Unit Connection	Nominal Flow L/min min ÷ max	Static Pressure bar min ÷ max	Oil Viscosity cSt min ÷ max
2"	Cod. 04099 01	Gas 2"	260 ÷ 600	10 ÷ 51	14 ÷ 290
	Cod. 04099 02	Gas 1"1/2			
	Cod. 04099 03	42 - M 52 x 2			

screw clockwise
to decrease the intervention flow rate
screw anticlockwise
to increase the intervention flow rate



**SAFETY VALVE
ADJUSTING
TYPE 2"**



Start Elevator Srl

08 171 / G

rev. 0

1/2

Valve adjustment instructions

The following tables give instructions to adjust the block valves on the basis of the litres normally used in the pump unit.

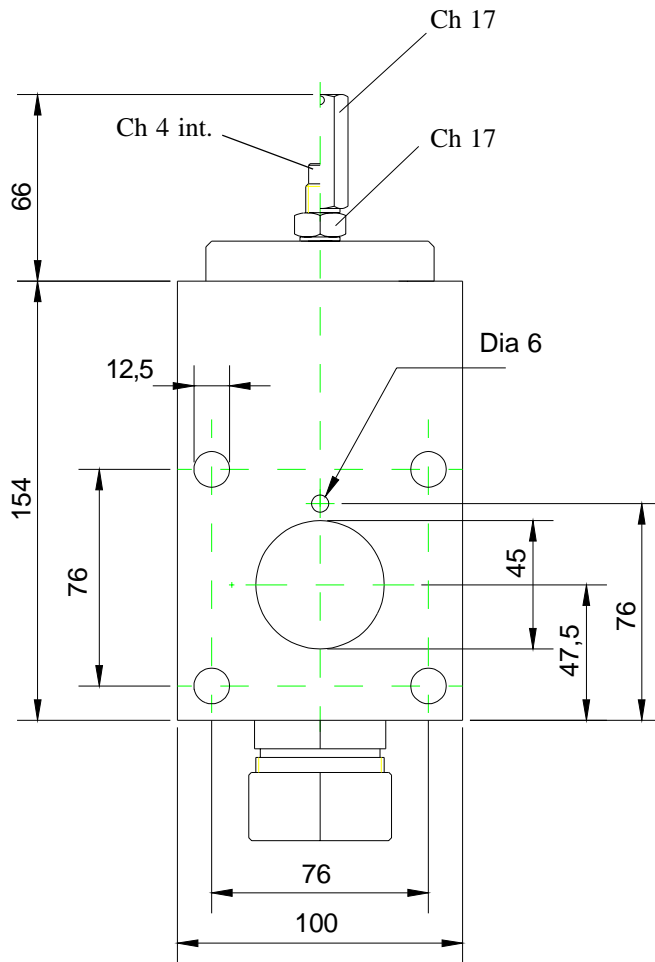
If the nominal operating flow rate of the unit is not indicated in the table, see the diagram on sheet 1 to find the right adjustment for the best intervention flow rate.

Once acquainted with the value of the adjusting turns, turn anticlockwise the valve cap, loosen the lock nut and turn clockwise the adjusting screw to the closing valve limit.

Then turn it anticlockwise to reach the adjusting value previously calculated.

Tighten the lock nut and turn the cap clockwise checking if there are oil leakages.

An intervention test is then recommended, following the instructions of the pump unit manufacturer.



VALVE 2" ADJUSTMENTS TABLE

Pump litres	Adjust.turns	L/min oper.	increase %
260	11	322	24
300	11 - 1/2	373	24
330	11 - 3/4	403	22
380	12 - 1/4	467	23
440	12 - 3/4	536	22
500	13 - 1/2	639	28
600	14 - 1/4	744	24