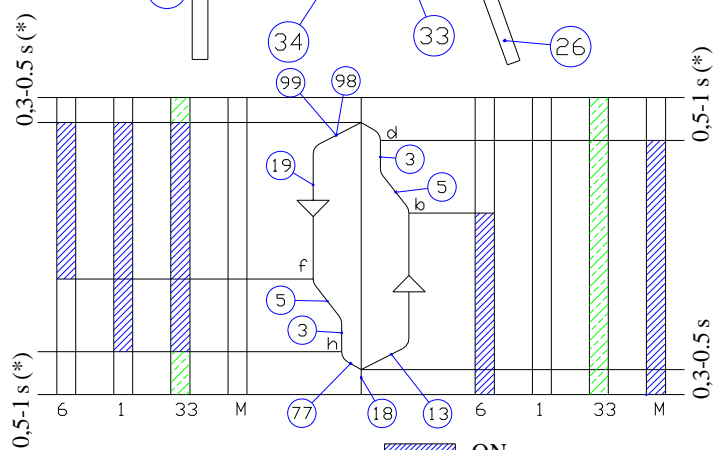


The devices in brackets are optional

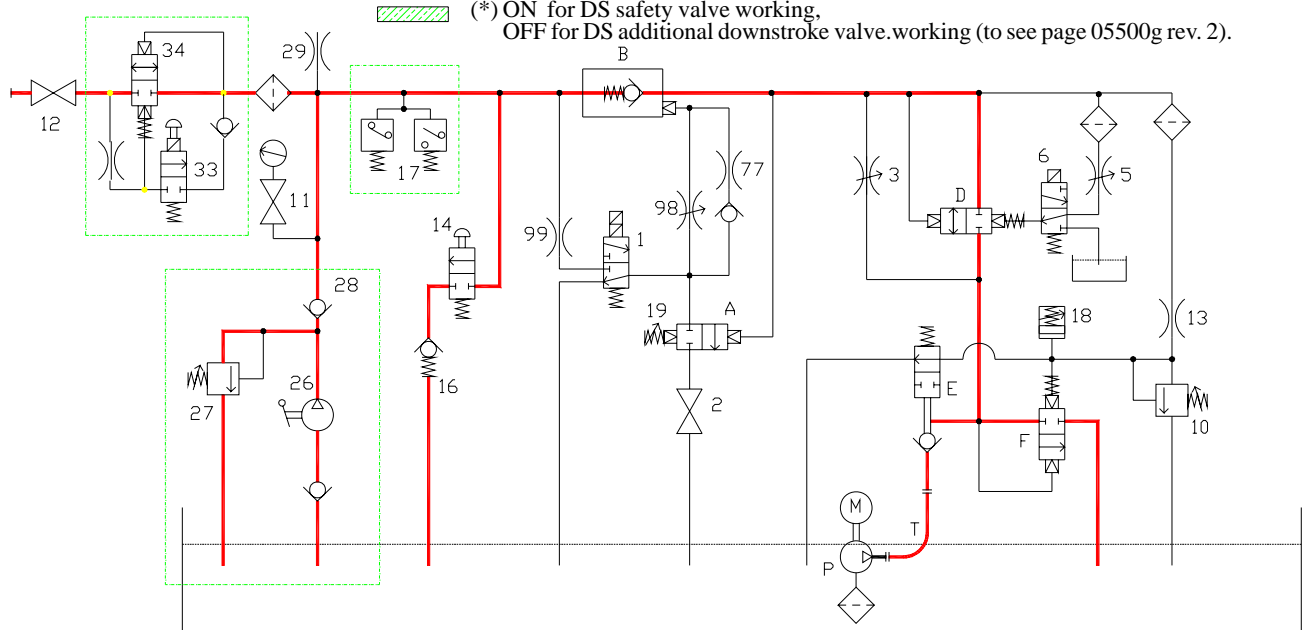
- 1 Downstroke solenoid valve
- 2 Drop test fastening
- 3 Downstroke and upward low speed adjusting screw
- clockwise decrease (-)
- anticlockwise increase (+)
- 5 Deceleration time adjusting screw
- clockwise increase (+)
- anticlockwise decrease (-)
- 6 High speed solenoid valve
- 7 High speed adjusting screw (*)
- 10 Maximum pressure valve adjusting screw
- clockwise increase (+)
- anticlockwise decrease (-)
- 11 Gauge cut-out cock
- 12 Valves cut-out cock
- 13 Upward start throttle
- 14 Emergency downstroke push button
- (17) Pressure switches
- 18 Calibrate of the time upward start
- clockwise decrease (-)
- anticlockwise increase (+)
- 19 Calibrate downstroke speed
- clockwise increase (+)
- anticlockwise decrease (-)
- (26) Hand pump
- (27) Hand pump safety valve adjusting screw
- clockwise increase (+)
- anticlockwise decrease (-)
- (28) Hand pump non-return valve
- 29 Air bleed (hand pump)
- 33 DS solenoid valve (*) and 2° downstroke push button
- 34 DS valve
- 98 Downstroke starting time adjusting screw
- clockwise increase (+)
- anticlockwise decrease (-)
- 77-99 Regulation throttle (*)
- A Pressure regulator assembly
- B Pilot-operated non-return valve
- D Speed shift valve
- E Pump non-return distributor valve
- F Upward starting and safety valve
- M Motor
- P Pump
- T Flexible pipe
- (*) THESE ELEMENTS ARE FACTORY SET. ADJUSTMENT SHOULD ONLY BE CARRIED OUT VIA MANUFACTURE'S TECHNICAL SPECIFICATIONS



ON
 OFF
 (*) ON for DS safety valve working,
 OFF for DS additional downstroke valve working (to see page 05500g rev. 2).

h - Downward stop contact
 f - Downward starting reducing speed contact
 d - Upward stop contact
 b - Upward starting reducing speed contact

At the upward command, in any case, wait 0.5 s -1 before motor starting.



VALVE ASSEMBLY AND DIAGRAM
96/E + DS 1/2"



Start Elevator

06 250 / G

rev. 2

1/1