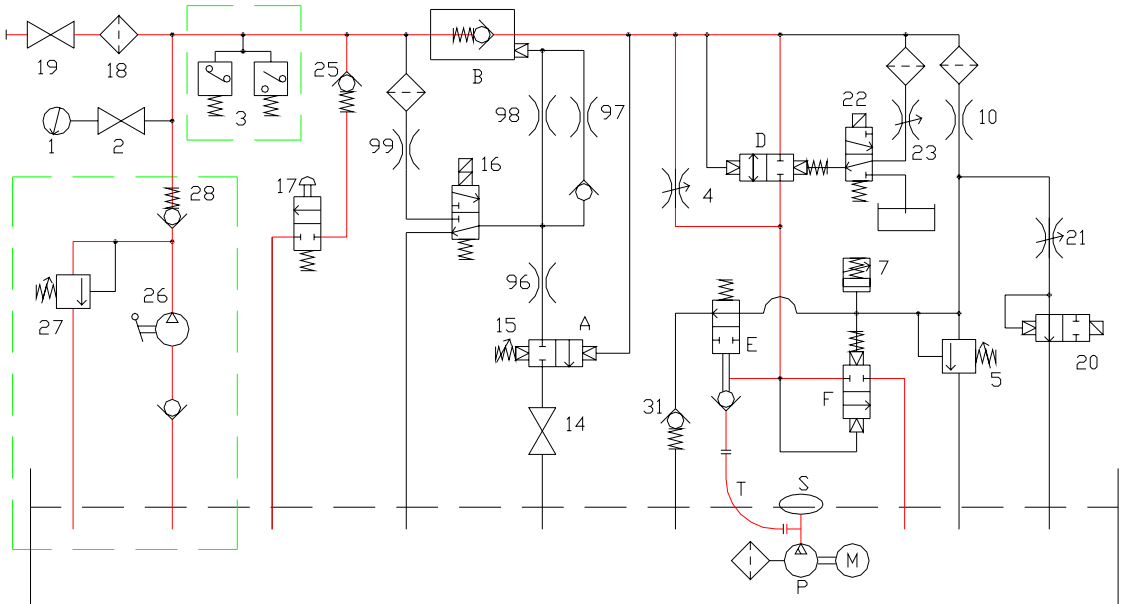


- 1 Gauge
  - 2 Gauge cut-out cock
  - 3 (Pressure switches)
  - 4 Low speed adjusting screw  
- clockwise decrease (-)  
- anticlockwise increase (+)
  - 5 Maximum pressure valve adjusting screw  
- clockwise increase (+)  
- anticlockwise decrease (-)
  - 7 Upward start time adjusting screw  
- clockwise decrease (-)  
- anticlockwise increase (+)
  - 10 Upward start throttle
  - 14 Test fastening screw
  - 15 Downward speed adjusting screw  
- clockwise increase (+)  
- anticlockwise decrease (-)
  - 16 Downstroke solenoid valve
  - 17 Emergency downstroke pushbutton (solenoid valve)
  - 18 Filter
  - 19 Valve cut-out cock
  - 20 (Upward stop solenoid valve) (Soft Stop)
  - 21 (Upward stop time adjusting screw)  
- clockwise increase (+)  
- anticlockwise decrease (-)
  - 22 Speed shift solenoid valve
  - 23 Speed shift time adjusting screw  
- clockwise increase (+)  
- anticlockwise decrease (-)
  - 25 Emergency downstroke minimum pressure valve
  - 26 (Hand pump)
  - 27 (Hand pump safety valve adjusting screw)  
- clockwise increase (+)  
- anticlockwise decrease (-)
  - 28 (Hand pump non-return valve)
  - 29 Speed shift valve arrest screw (\*)
  - 30 Safety valve arrest screw (\*)
  - 31 Pilot circuit check valve
- 96-97-98-99 Throttles  
 A) Pressure regulator assembly  
 B) Pilot - operated non-return valve  
 D) Valvola di passaggio velocità  
 E) Pump non-return distributor valve  
 F) Upward starting and safety valve  
 M) Motor  
 P) Pump  
 S) (Pump silencer)  
 T) Flexible pipe  
 (\*) THIS VALVE IS FACTORY SET. ADJUSTMENT SHOULD ONLY BE CARRIED OUT VIA THE MANUFACTURE'S TECHNICAL SPECIFICATIONS

The devices in brackets are optional



- h- Downward stop contact
- f- Downward starting reducing speed contact
- d- Upward stop contact
- b- Upward starting reducing speed contact



**VALVE ASSEMBLY AND DIAGRAM  
PUMP UNIT  
2" - 04/E Soft Stop**



**Start Elevator**

**03 212 / G**

**rev. 0**

**1/1**