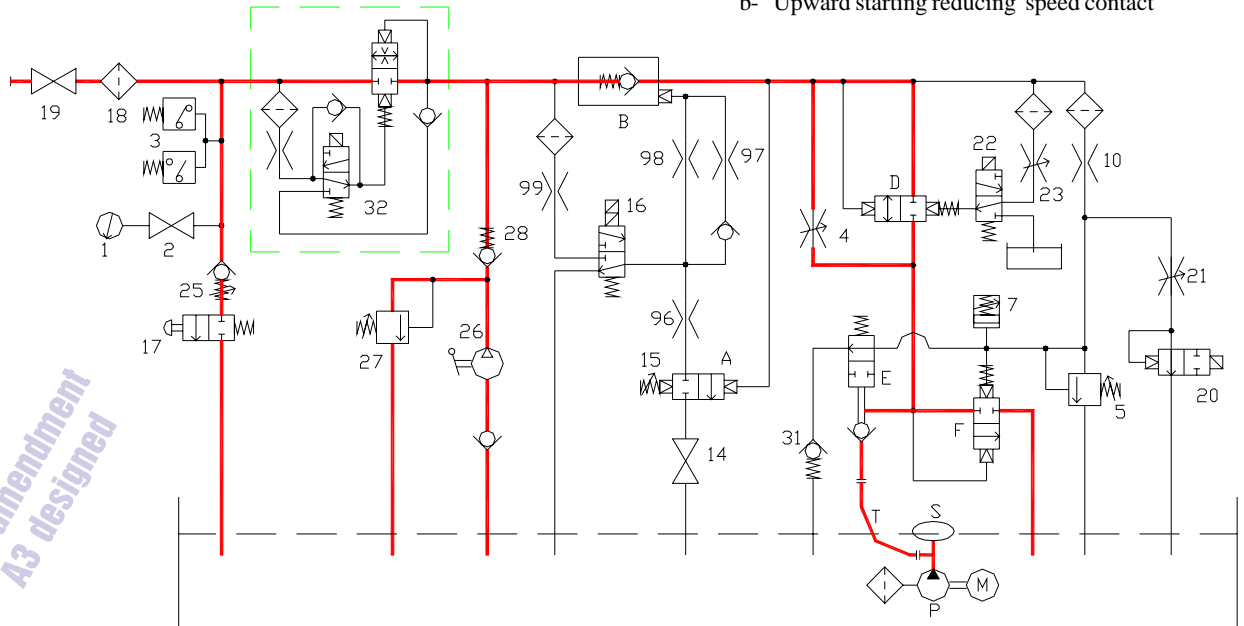
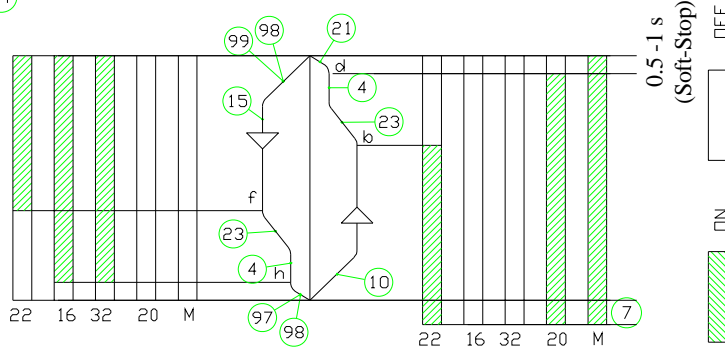


- 1 Gauge
 - 2 Gauge cut-out cock
 - 3 (Pressure switches)
 - 4 Low speed adjusting screw
- clockwise decrease (-)
- anticlockwise increase (+)
 - 5 Maximum pressure valve adjusting screw
- clockwise increase (+)
- anticlockwise decrease (-)
 - 7 Upward start time adjusting screw
- clockwise decrease (-)
- anticlockwise increase (+)
 - 10 Upward start throttle
 - 14 Test fastening screw
 - 15 Downward speed adjusting screw
- clockwise increase (+)
- anticlockwise decrease (-)
 - 16 Downstroke solenoid valve
 - 17 Downstroke pushbutton (anticlockwise rotation)
 - 18 Filter
 - 19 Valve cut-out cock
 - 20 (Upward stop solenoid valve) (Soft Stop)
 - 21 (Upward stop time adjusting screw)
- clockwise increase (+)
- anticlockwise decrease (-)
 - 22 Speed shift solenoid valve
 - 23 Speed shift time adjusting screw
- clockwise increase (+)
- anticlockwise decrease (-)
 - 25 Emergency downstroke minimum pressure valve
 - 26 (Hand pump)
 - 27 (Hand pump safety valve adjusting screw)
- clockwise increase (+)
- anticlockwise decrease (-)
 - 28 (Hand pump non-return valve)
 - 29 Speed shift valve arrest screw (*)
 - 30 Safety valve arrest screw (*)
 - 31 Pilot circuit check valve
 - 32 2" DS device solenoid valve
 - 96-97-98-99 Throttles
 - A) Pressure regulator assembly
 - B) Pilot - operated non-return valve
 - D) Valvola di passaggio velocità
 - E) Pump non-return distributor valve
 - F) Upward starting and safety valve
 - M) Motor
 - P) Pump
 - S) (Pump silencer)
 - T) Flexible pipe
- (*) THIS VALVE IS FACTORY SET. ADJUSTMENT SHOULD ONLY BE CARRIED OUT VIA THE MANUFACTURE'S TECHNICAL SPECIFICATIONS
- h- Downward stop contact
f- Downward starting reducing speed contact
d- Upward stop contact
b- Upward starting reducing speed contact

The devices in brackets are optional



For amendment A3 designed

**VALVE ASSEMBLY AND DIAGRAM
PUMP UNIT
2" - 08/E+DS Soft Stop**



Start Elevator

03 213 / G

rev. 0

1/1