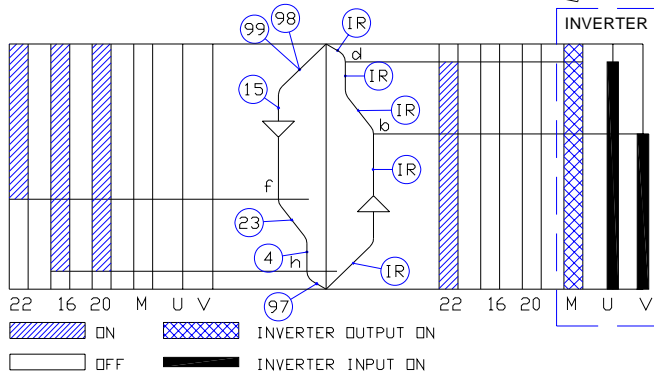


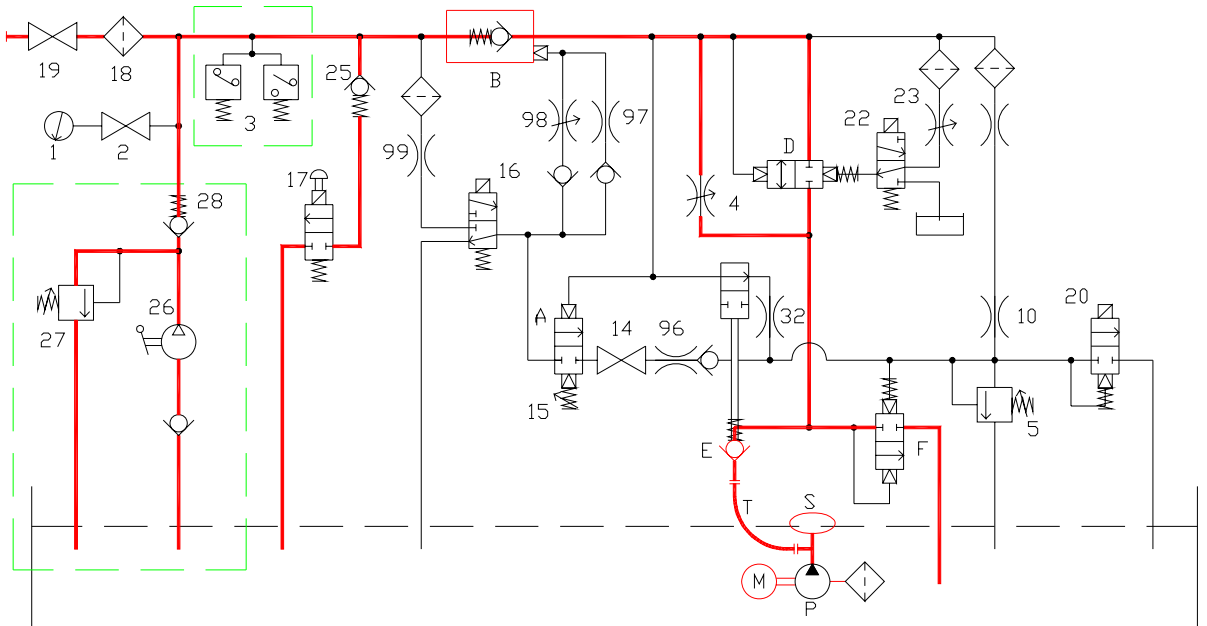
- 1 Gauge
- 2 Gauge cut-out cock
- 3 (Pressure switches)
- 4 Downward low speed adjusting screw
- clockwise decrease (-) - anticlockwise increase (+)
- 5 Maximum pressure valve adjusting screw
- clockwise increase (+) - anticlockwise decrease (-)
- 7 (mechanical starting)
- 10 Upward pressurizing throttle
- 14 Test fastening screw
- 15 Downward speed adjusting screw
- clockwise increase (+) - anticlockwise decrease (-)
- 16 Downstroke solenoid valve
- 17 Emergency downstroke pushbutton (solenoid valve)
- 18 Filter
- 19 Valve cut-out cock
- 20 2° Downstroke solenoid valve
- 22 Downstroke speed shift solenoid valve
- 23 Downstroke speed shift time adjusting screw
- clockwise increase (+) - anticlockwise decrease (-)
- 25 Emergency downstroke minimum pressure valve
- 26 (Hand pump)
- 27 (Hand pump safety valve adjusting screw)
- clockwise increase (+) - anticlockwise decrease (-)
- 28 (Hand pump non-return valve)
- 29 Speed shift valve arrest screw (*)
- 30 Safety valve arrest screw (*)
- 32 Safety valve closing throttle
- 98 Downward start time adjusting screw
- clockwise increase (+) - anticlockwise decrease (-)
- 96-97-99 Throttles
- A) Pressure regulator assembly
- B) Pilot - operated non-return valve
- D) Speed shift valve
- E) Pump non-return distributor valve
- F) Upward starting and safety valve
- M) Asynchronous Motor
- P) Pump
- S) Pump silencer
- T) Flexible pipe
- (*) THIS VALVE IS FACTORY SET. ADJUSTMENT SHOULD ONLY BE CARRIED OUT VIA THE MANUFACTURE'S TECHNICAL SPECIFICATIONS



- h - Downward stop contact
- f - Downward starting reducing speed contact
- d - Upward stop contact
- b - Upward starting reducing speed contact

IR Inverter setting

For amendment A3 designed



The devices in brackets are optional

**VALVE ASSEMBLY AND DIAGRAM
PUMP UNIT 93/E - 2DS
WITH UPWARD INVERTER**



Start Elevator

03 134 / G

rev. 1

1/1